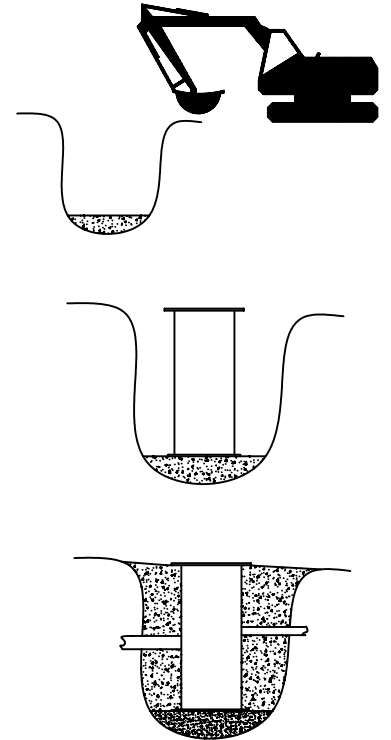


# INSTALLATION GUIDE FOR FIBERGLASS BASINS

1. Inspect all parts and material supplied by Jackel, Inc. to assure no shipping damage. Remove shipping nuts from cover bolts if present.
2. Excavate hole large enough to accommodate basin, backfill and all piping.
3. Add 4" to 6" of backfill material or concrete to bottom of hole. Ensure it is level, compacted and smooth.
4. Install basin in hole making sure it is level. Anchor if necessary to concrete pad.
5. If buoyancy is a problem, ballast in the form of concrete may be poured, or concrete collars lowered on top of the anti-floatation collar.
6. Carefully backfill with naturally rounded gravel or stone, larger than 3/8" and smaller than 3/4" diameter, around periphery of the basin.
7. Connect all piping as their level is reached with backfill.



CAUTION: If alternative backfill material is used, written approval must be obtained from Jackel Inc. or warranty is void.

# INSTALLATION GUIDE FOR RAIL SYSTEMS

1. Install Rail over studs in Basin Bottom and secure with 1/2" Washers, Lock Washers and nuts supplied.
2. Level Rail(s) to ensure smooth operation.
3. Secure Top Bracket to Basin walls with 1/4" Nuts and Bolts supplied.
4. Install Top Rail Stand-off Brackets from top of Rail to Top Bracket. Secure with 1/4" Nuts, Bolts and Washers supplied.
5. Drill Hole in Basin side for Discharge piping refer to Hub for correct size.
6. Plumb Discharge with parts supplied. Plumb as required for your application.
7. Pull Disconnect from Basin using cable.
8. Teflon Tape or put Pipe Sealer on end of Pipe.
9. Screw Pipe into Pump until tight and facing correct direction.
10. Slide Disconnect and Pump onto Rails and lower into Basin until engaging Disconnect.
11. Have Electrician wire Pump(s).

